



Preservation in motion

A company steeped in tradition

Mathys Ltd Bettlach

WHAT DOES MATHYS STAND FOR?



The Mathys name stands for both a successful entrepreneurial family and a successful business, so it is no coincidence that the family's company bears the family's name. «Pioneering», «cooperative» and «proven» were the values that drove its years of successful growth and that make Mathys the company it is today. It has also retained its passionate commitment to preserving patient movement and thus quality of life – «Preservation in motion». Because, as we all know, movement is life.

For over 60 years, we have been driven by the surgeon's motivation to enable pain-free joint mobility for patients. The foundation of our success was and is the linkage between science, the clinical work of the surgeon and industry that Mathys embodies. We tackle clinical challenges and work with doctors to find innovative technical solutions. We retain the tried and tested, the basis for highly positive, long-term clinical results. This has resulted in world-class implants and instruments.

The company was established 75 years ago by Dr h. c. Robert Mathys. In 1947, he began producing the first machines, apparatuses and components out of rustproof and acid-resistant special steel in his workshop in Bettlach. A good ten years later, he crossed paths with

the surgeon and orthopaedist Maurice E. Müller. This would prove to be a groundbreaking encounter of two pioneers, which would lay the foundation for the Mathys company. Today, Mathys International is considered the leading name for artificial hips, knees and shoulders. In the 30 years since Mathys decided to specialise in orthopaedics, the family-owned company has experienced strong growth. Revenues grew from almost CHF 50 million to over CHF 130 million, and the number of employees expanded from 200 to almost 600. To celebrate the company's anniversary, it is our pleasure to present you with this brochure offering a chronological and historical view of the development of Mathys.

Medical technology is constantly changing, so keeping pace will mean continuing to apply the right technologies and innovations in the future. We can only guess what the market will look like in the next ten years. But we know one thing for sure – we will be focusing on our values: pioneering, cooperative and proven.

Yours sincerely,

A stylized, handwritten signature in blue ink, belonging to Dr. Benjamin Reinmann. The signature is fluid and cursive, with a long horizontal stroke at the end.

Dr Benjamin Reinmann
CEO, Mathys Ltd Bettlach

A COMPANY STEEPED IN TRADITION

Mathys Ltd Bettlach is among the select circle of pioneering companies in the medical technology sector. Founded by Dr Robert Mathys in 1946, it operates in a region known for making world-famous Swiss watches. With that same precision and reliability, the highly qualified specialists at Mathys produce joint prostheses for orthopaedic surgery. The company is celebrating its 75th anniversary in 2021.

It was company founder Dr Robert Mathys, along with surgeon Maurice E. Müller, who set the worldwide standard for osteosynthesis in 1958. The bone screws, plates and instruments developed in Bettlach revolutionised the treatment of bone fractures. Later, the collaboration between Mathys and the osteosynthesis working group (now the AO Foundation) would become a milestone in medical history, and was expanded by the companies Straumann and Synthes USA. This unique collaboration between leading physicians and innovative manufacturers led, over a series of stages, to the emergence of the market leader Synthes, which today belongs to the global conglomerate Johnson & Johnson.

From the very beginning, Mathys was active not only in osteosynthesis, but also in the field of artificial joint replacements. Here again, it was the ingenious engineer Dr Robert Mathys and renowned orthopaedist Maurice E. Müller whose jointly developed hip

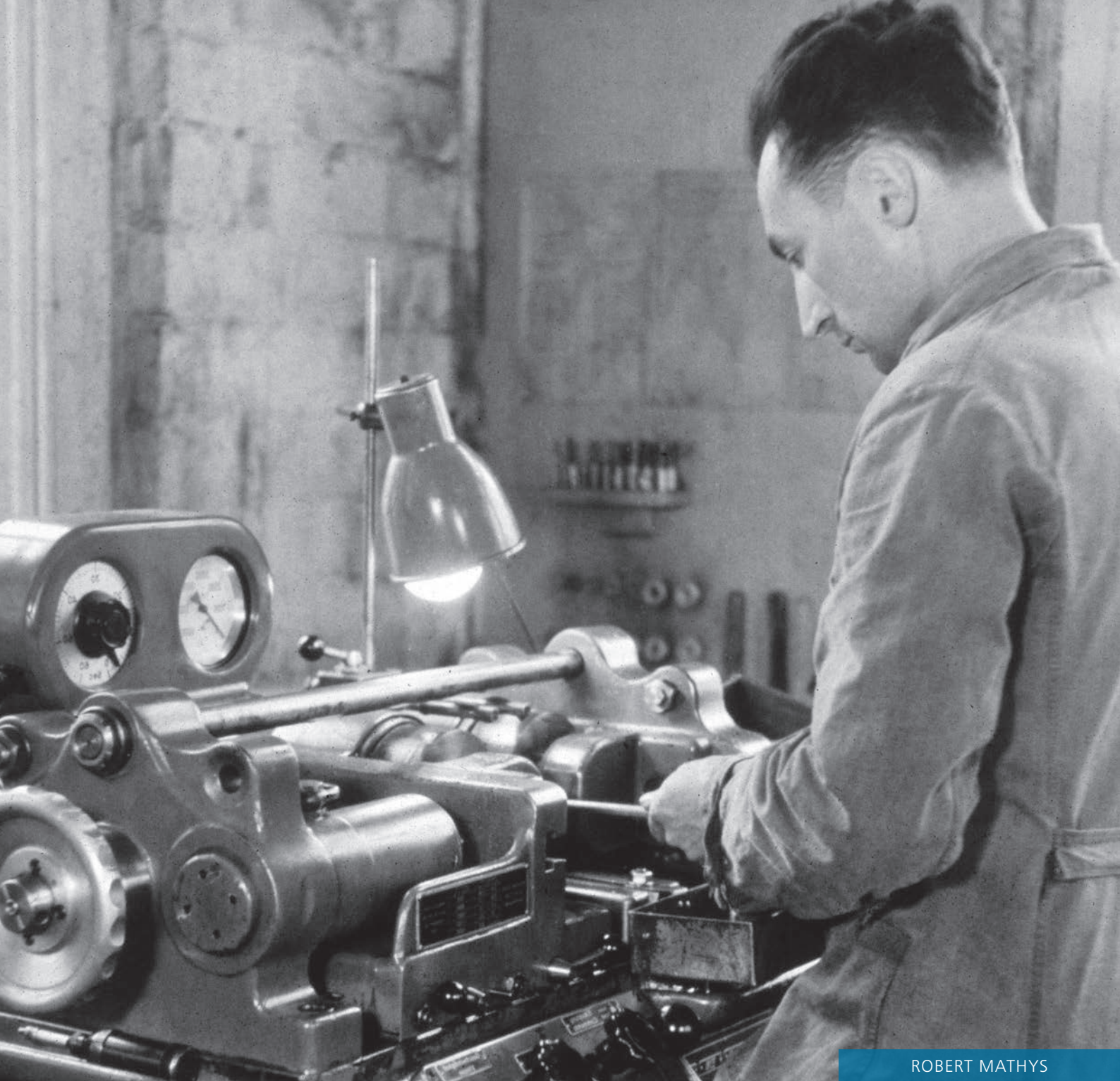
prosthesis was the first to be implanted on the European continent back in 1961. Based in Bettlach, Mathys would go on to produce the hip joints for Müller's company Protek until it was acquired by Sulzer Medica in 1996. Drawing on its 35 years of experience, Mathys marketed its joint prostheses under its own name from then on. It was an outcome that Mathys had plotted five years earlier when it set its strategic focus on joint replacement. Management of the company had meanwhile passed to the second generation. Hugo Mathys, the youngest son of the company founder, had been in charge of the joint replacement division since 1991, while eldest son Robert Mathys Jr was advancing the company's in-house Research and Development Unit

In 2003, Mathys decided to sell the osteosynthesis business to Synthes USA so it could focus exclusively on the manufacture of hip, knee and shoulder prostheses. It was a bold move for the company. However, there was a clear strategic focus on joint replacement. One year earlier, Mathys had taken over the company Keramed from Germany, which specialised in ceramic materials for endoprosthetics. In spite of its many years of expertise, Mathys was minuscule compared to the multinational corporations that dominated the joint replacement market. The first few years of rebuilding the company were correspondingly difficult. Under the leadership of Hugo

Mathys, it steadily strengthened its market position and grew its sales from CHF 56 million in 2004 to CHF 143 million in 2019. The company now once again employs well over 600 staff.

The prostheses from the venerable Swiss company meet the highest standards of quality and boast excellent registry data. Its best-known product remains the hip prosthesis, although today's products bear little resemblance to the comparatively massive steel implants of the 1960s. The optimys prosthesis from Bettlach is part of a bone-preserving joint system called «bonepreservation». The core of the prosthesis shaft is made of a titanium alloy, but is much shorter and slimmer in form to adapt to anatomical circumstances. The second component of the system is a ceramic head on the shaft. The third is the unparalleled RM (Robert Mathys) hip cup, in which the spherical ceramic head fits into a counterpart made of highly cross-linked polyethylene enriched with vitamin E. It's a long-selling stalwart from Mathys: well over half a million patients rely on its long-lasting robustness. Alongside this classic, Mathys also sells successful implant systems for knees and shoulders as well as sports medicine. The company currently sees its greatest potential in artificial shoulder joints, a field in which it is about to launch a promising new product for anatomical shoulder joint replacement as part of the Affinis shoulder system.

Mathys products are manufactured exclusively at the headquarters in Bettlach and its German production facility near Jena. The share of components produced by suppliers is less than a quarter. Since the very beginning, Mathys has placed great importance on modern and excellent working conditions, which enable it to retain outstanding specialist staff over the long term. Firmly rooted in the Swiss Plateau and the east German state of Thuringia, the company enjoys a sterling reputation. Here, the people know the exceptional history behind the company name and its importance in the economic development of the region. Over its 75-year history, the values and principles that continue to define the company today have been the foundation of its enduring success. This is reflected in Mathys' slogan, «Preservation in motion», and the company's values: pioneering, cooperative and proven.



ROBERT MATHYS

1946

At just 25, Robert Mathys establishes the company Rob. Mathys & Co., with the commercial registry entry dated 1 June 1946. Robert Mathys specialises in processing stainless steel, and buys three second-hand automatic lathes and begins production in mid-June. This is the cornerstone for today's Mathys Ltd Bettlach.

1958

Maurice E. Müller meets Robert Mathys. This is the impetus for the move into medical technology: Mathys begins developing and producing implants and instruments for knee surgery and orthopaedics. He attends operations at the hospital in Grenchen to gain insights into the subject.

ROBERT MATHYS





ROBERT MATHYS, MAURICE E. MÜLLER

1961

On 9 February 1961, Maurice E. Müller implants the first hip prosthesis developed by Robert Mathys into a patient. It is the first implant of an artificial hip joint on the European continent.

1967

Mathys begins production of artificial hip joints for the company Protek in Bern, owned by Maurice E. Müller. This is the inception of the second mainstay of the company's activities. In addition to screws and plates, it now also produces artificial joints.



1973

RM CLASSIC NON-COATED

The beginning of the uncemented elastic monoblock cup. This is developed on the basis of the design of the cemented Müller cup with the aim of achieving high primary implant stability without bone cement.





ROBERT MATHYS

1974

The Faculty of Medicine of the University of Bern awards Robert Mathys an honorary doctorate with the title «Doctor honoris causa» for his contributions to the field of bone medicine. In his nomination letter to the Dean of the Faculty of Medicine, surgeon Maurice E. Müller writes: «In Mr Mathys, the faculty would be awarding an honorary doctorate to a simple man who has made pioneering achievements in the field of bone surgery.»



1981

Worldwide, Robert Mathys & Co. employs over 400 staff. The product range has grown to 3,149 products. The company's clients include 8,000 hospitals, and 95 % of production is exported. The most important markets are France and Germany.

1983

Mathys's own «RM» (Robert Mathys) titanium coating is first used in the RM Classic. The titanium particles enable the osseointegration of the implant. They are individually anchored in the polyethylene and not structurally connected to each other. The elasticity of the implant is therefore not changed by the coating.





1991

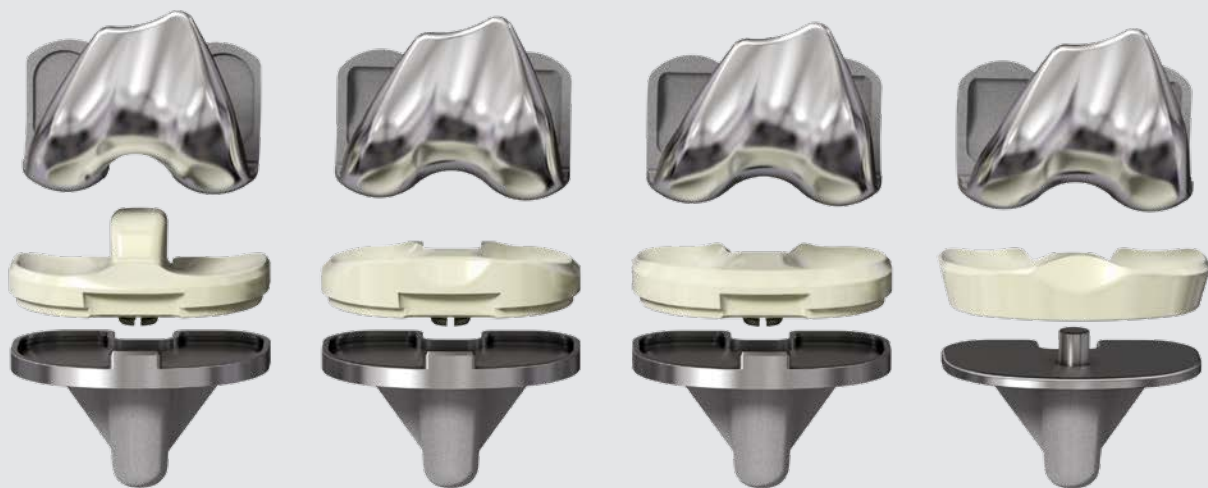
The Mathys shareholders lay the strategic foundation for the establishment of a dedicated orthopaedics division. Hugo Mathys takes charge of setting up the Joint Replacement Division. This will later prove an important decision in the company's ability to survive independently.

1996

Robert Mathys Jr takes over as Chairman of the Board of Directors of «Mathys Medizinaltechnik AG». The company celebrates its 50th anniversary with a big celebration and a new brand image. Over a number of decades, Mathys produces hip joints for Müller's company Protek until it is acquired by Sulzer Medica in 1996. Drawing on its 35 years of experience, Mathys starts marketing its joint prostheses under its own name in 1996. Five years earlier, Mathys set a deliberate course for this point with its strategic focus on joint replacement.



ROBERT MATHYS JUNIOR, ROBERT MATHYS, HUGO MATHYS



1998

BALANSYS BICONDYLAR

The proven, stable and enhanced knee system balanSys BICONDYLAR is first implanted in 1998. Ahead of its time when introduced, it is still going strong today and has been subject to further technological development in recent years with the launch of leggera instruments and vitamys inlays.

2002

Mathys acquires the company Keramed in Germany. The company is specialised in ceramic materials, with which Mathys has been experimenting in the field of joint replacements for years. In the early 1970s, Keramed was one of the first companies worldwide to develop and sell bioceramics for endoprosthesis.





2002

RM PRESSFIT

Based on the proven concept of the elastic RM Classic cup, development continues with the introduction of an RM Pressfit version without pegs.

2003

The Mathys family decides to sell the Osteosynthesis Unit and thus 90 % of the company's volume to Synthes USA. The new Mathys Ltd Bettlach now focuses on hip, knee and shoulder prostheses. CEO Hugo Mathys leads the company, alongside Chairman of the Board of Directors Robert Mathys Jr, who will pass down that role to Hugo Mathys a few years later.



HUGO MATHYS



ROBERT MATHYS JUNIOR

2007

CERAMYS

Five years after the acquisition of Keramed, Mathys launches its first heads made of dispersion ceramic – ceramys – for use in hip arthroplasty. All Mathys ceramics are developed, produced and tested internally.





LIVIO MARZO, HUGO MATHYS, ROBERT MATHYS JUNIOR

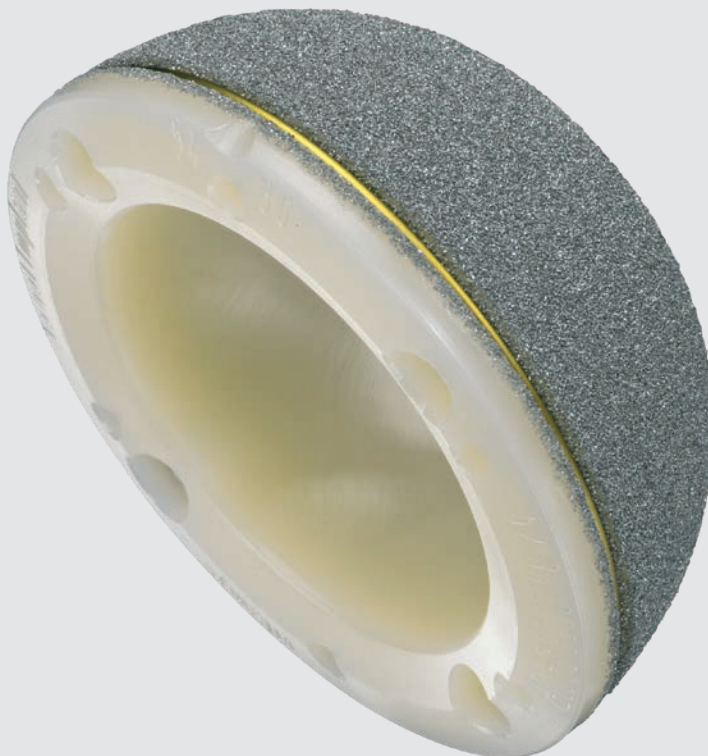
2008

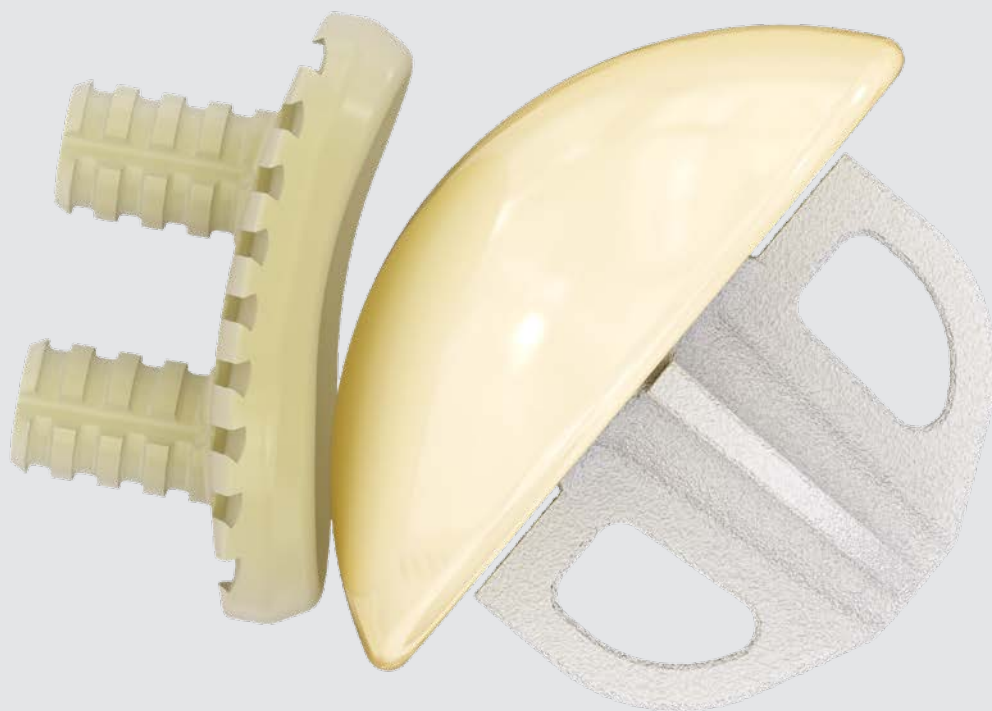
Livio Marzo becomes the first member of the third generation of the family to join the Mathys Board of Directors. Marzo is CEO of Thommen Medical Group, which specialises in artificial tooth root replacements. The Thommen Medical Group's dental implants also originated with Mathys.

2009

RM PRESSFIT VITAMYS

The RM cup undergoes the next step in its development and from now on is offered in vitamys. vitamys is a vitamin E-enriched, highly cross-linked polyethylene with high elasticity, high resistance to wear and oxidation and good mechanical strength.





2009

AFFINIS SHORT

Mathys makes a pioneering achievement in development with the stemless shoulder prosthesis. Mathys set itself the objective of developing a solution that united the advantages of simple anatomic reconstruction without major bone loss. The result is Affinis Short.



2010

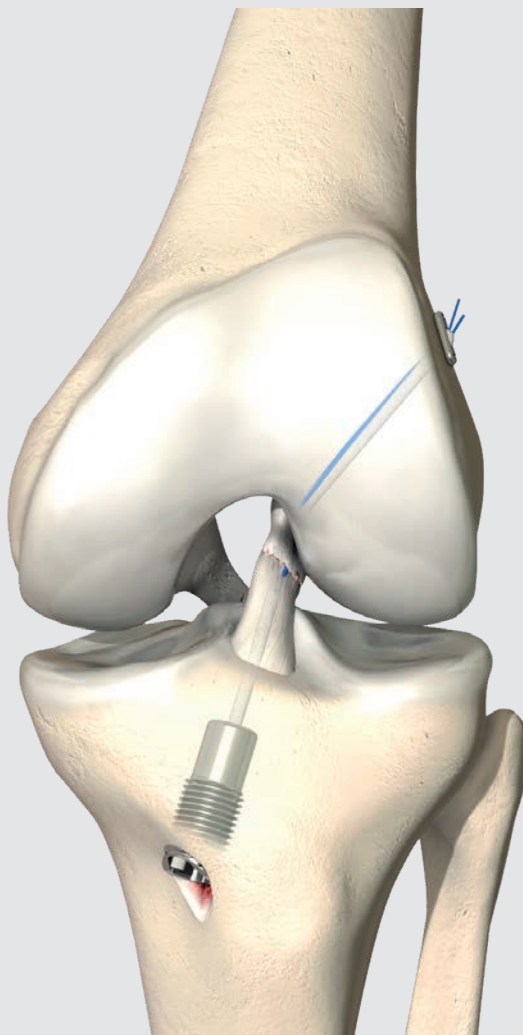
OPTIMYS

With the optimys short stem, Mathys achieved a further pioneering development. The prosthesis is developed to reconstruct the individual anatomical conditions of the patient with a bone-preserving design.

2012

LIGAMYS

With Ligamys, Mathys gains a foothold in the field of sports orthopaedics. Ligamys is a method for the treatment of cruciate ligament tears in which the original cruciate ligament and its functions are preserved. A further product that reflects the principle of «Preservation in motion».





2013

«Güterstrasse» in Bettlach is renamed «Robert Mathys Strasse» in a ceremony attended by ten grandchildren and great-grandchildren of the company founder. In front of the house in which the entire company history began, a granite commemorative plaque is unveiled.

2015

Test pilot Roger Mathys becomes the second member of the third generation to join the Board of Directors of Mathys Ltd Bettlach, succeeding his father, Robert Mathys Jr.





BENJAMIN REINMANN, HUGO MATHYS

2017

After a three-year consolidation phase, Hugo Mathys hands over the operational management of Mathys Ltd Bettlach to Benjamin Reinmann. Originally a physician, Reinmann comes from the family-run business Ypsomed, where he worked for 12 years. «I know what I'm getting into», he says on taking on the role.

2020

Hugo Mathys hands the chairmanship of the Board of Directors to his nephew Livio Marzo and thus the third Mathys generation. Though impacted by the coronavirus pandemic, Mathys Ltd Bettlach nevertheless posts a profit at year end.

LIVIO MARZO





2021

Mathys celebrates its 75th anniversary and the hundredth birthday of its founder Dr Robert Mathys. It is an extraordinary company history in many ways, one that underscores the slogan «Preservation in motion» and the values pioneering, cooperative and proven.

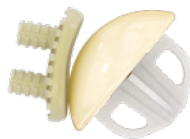
Preservation in motion

BUILDING ON OUR
HERITAGE

MOVING TECHNOLOGY
FORWARD

STEP BY STEP WITH OUR
CLINICAL PARTNERS

TOWARDS A GOAL OF
PRESERVING MOBILITY



Australia	Mathys Orthopaedics Pty Ltd Artarmon, NSW 2064 Tel: +61 2 9417 9200 info.au@mathysmedical.com	Italy	Mathys Ortopedia S.r.l. 20141 Milan Tel: +39 02 4959 8085 info.it@mathysmedical.com
Austria	Mathys Orthopädie GmbH 2351 Wiener Neudorf Tel: +43 2236 860 999 info.at@mathysmedical.com	Japan	Mathys KK Tokyo 108-0075 Tel: +81 3 3474 6900 info.jp@mathysmedical.com
Belgium	Mathys Orthopaedics Belux N.V.-S.A. 3001 Leuven Tel: +32 16 38 81 20 info.be@mathysmedical.com	New Zealand	Mathys Ltd. Auckland Tel: +64 9 478 39 00 info.nz@mathysmedical.com
France	Mathys Orthopédie S.A.S 63360 Gerzat Tel: +33 4 73 23 95 95 info.fr@mathysmedical.com	Netherlands	Mathys Orthopaedics B.V. 3001 Leuven Tel: +31 88 1300 500 info.nl@mathysmedical.com
Germany	Mathys Orthopädie GmbH «Centre of Excellence Sales» Bochum 44809 Bochum Tel: +49 234 588 59 0 sales.de@mathysmedical.com «Centre of Excellence Ceramics» Mörsdorf 07646 Mörsdorf/Thür. Tel: +49 364 284 94 0 info.de@mathysmedical.com «Centre of Excellence Production» Hermsdorf 07629 Hermsdorf Tel: +49 364 284 94 110 info.de@mathysmedical.com	P. R. China	Mathys (Shanghai) Medical Device Trading Co., Ltd Shanghai, 200041 Tel: +86 21 6170 2655 info.cn@mathysmedical.com
		Switzerland	Mathys (Schweiz) GmbH 2544 Bettlach Tel: +41 32 644 1 458 info@mathysmedical.com
		United Kingdom	Mathys Orthopaedics Ltd Alton, Hampshire GU34 2QL Tel: +44 8450 580 938 info.uk@mathysmedical.com

Local Marketing Partners in over 30 countries worldwide ...

